

MODEL NUMBER: LBUP-(BUSTYPE)H(VINYL)2-(LENGTH)L(LEDCENTER)(mA)(FINISH)(PENDANTLENGTH)-M2	FIXTURE TYPE: LEDINBUS	SCALE: 3/8"=1"	FILE NUMBER: BuswayEM_Fixtures\Submittal\BusWayEmergency_Submittal	DATE: 1/27/21	NO.	REVISIONS DESCRIPTION	BY	DATE
PROJECT NAME:	APPROX. WEIGHT:	DRAWN BY: M.A.S	CK'D BY:	FIXTURE DESCRIPTION: EMBEDDED LED IN BUSRUN PENDANT MOUNTED				

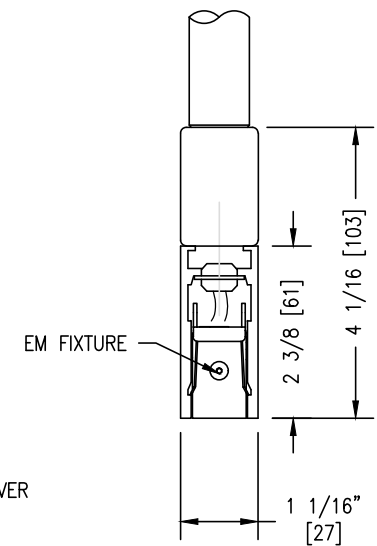
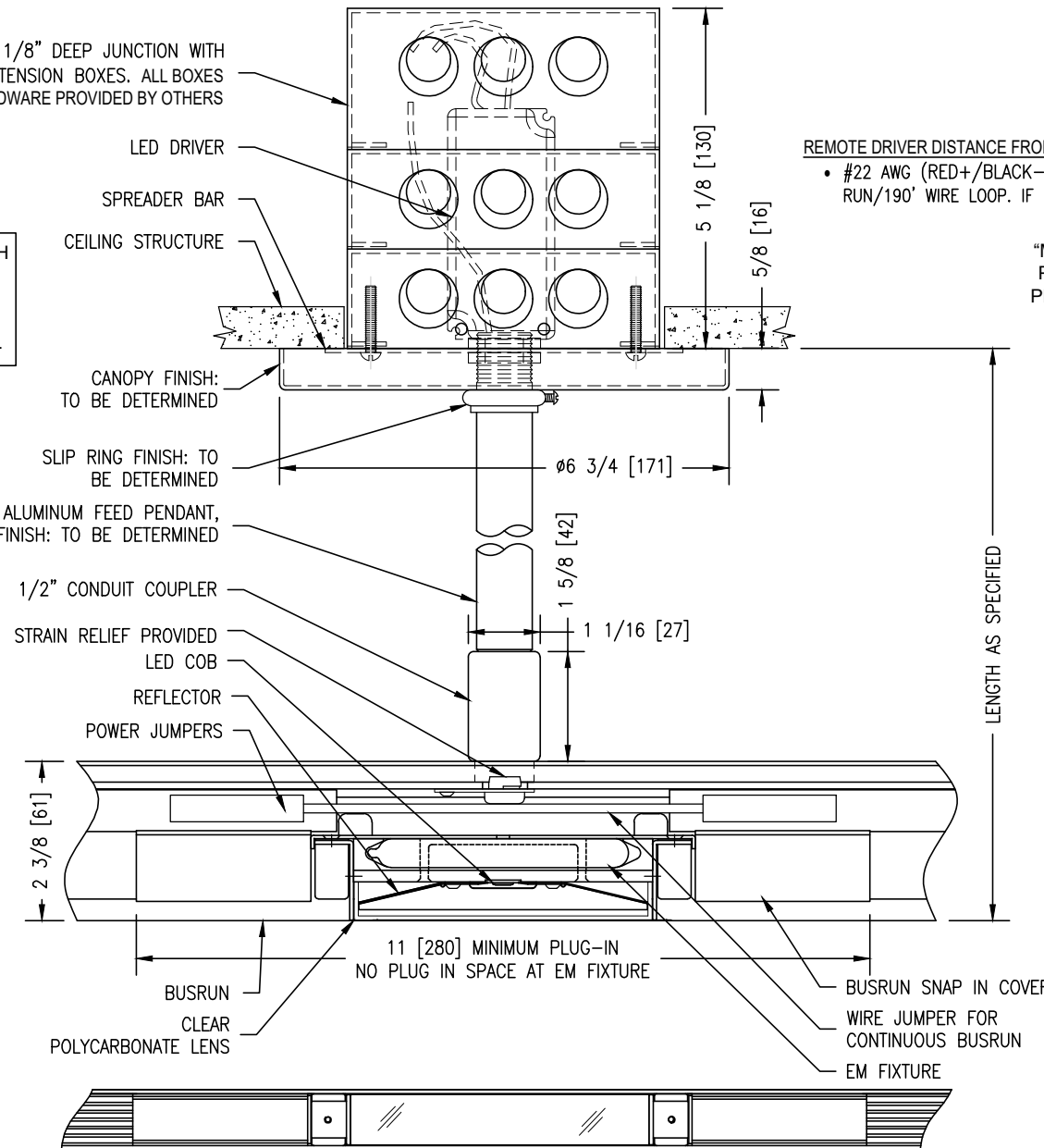
4 11/16" SQ. x 2 1/8" DEEP JUNCTION WITH
(2) 1 1/2" DEEP EXTENSION BOXES. ALL BOXES
AND MOUNTING HARDWARE PROVIDED BY OTHERS



REMOTE DRIVER DISTANCE FROM LED BASED ON WIRE GAUGE:
• #22 AWG (RED+/BLACK-) : MAXIMUM REMOTE DISTANCE: 95' WIRE
RUN/190' WIRE LOOP. IF LONGER DISTANCE IS NEEDED CONSULT FACTORY

INSTALL HANGING HARDWARE IN SUCH
A MANNER THAT THE BUSWAY CAN
BEAR A 100 LB (46kg) STATIC LOAD
(PLUS APPROPRIATE FACTOR OF
SAFETY) BETWEEN SUPPORT POINTS.

"MAINTAIN POLARITY FOR LED WIRING.
POLARITY REVERSAL WILL RESULT IN
PERMANENT DAMAGE TO THE LED NOT
COVERED UNDER WARRANTY."
MAKE SURE THE ASSEMBLY NOTES
FOR THE DRIVER HOUSING AND LED
PIGTAILS INCLUDE LABELING EACH
WIRE FOR FUNCTION.



EM INPUT REQUIREMENTS:
120V/60Hz (A) .14AMPS

DRIVER CURRENT/ ESTIMATED LUMENS
OUTPUT::
700mA/1273LM/12W LOW CEILING (L)
1050mA/1800LM/18W HIGH CEILING (H)

LED SPEC:
CREE CXB1310, 92 CRI, 3000K

BUSRUN FINISH:
WHITE (P)
BLACK (MB)
CUSTOM PAINT (CP)
RAW (UF)
BRUSHED ALUMINUM (NT)

PROPRIETARY & CONFIDENTIAL: THE INFORMATION CONTAINED IN THIS DRAWING IS THE SOLE PROPERTY OF LITELAB. ANY REPRODUCTION IN PART OR AS A WHOLE WITHOUT THE WRITTEN PERMISSION OF LITELAB IS PROHIBITED.

litelab
corp.

Litelab Corp. 251 Elm Street Buffalo, NY 14203 (716) 856-4491 (716) 856-4300 fax: (716) 856-0156

C:\Litelab\SolidWorks\Product\BuswayEM_Fixtures\Submittal\BusWayEmergency_Submittal