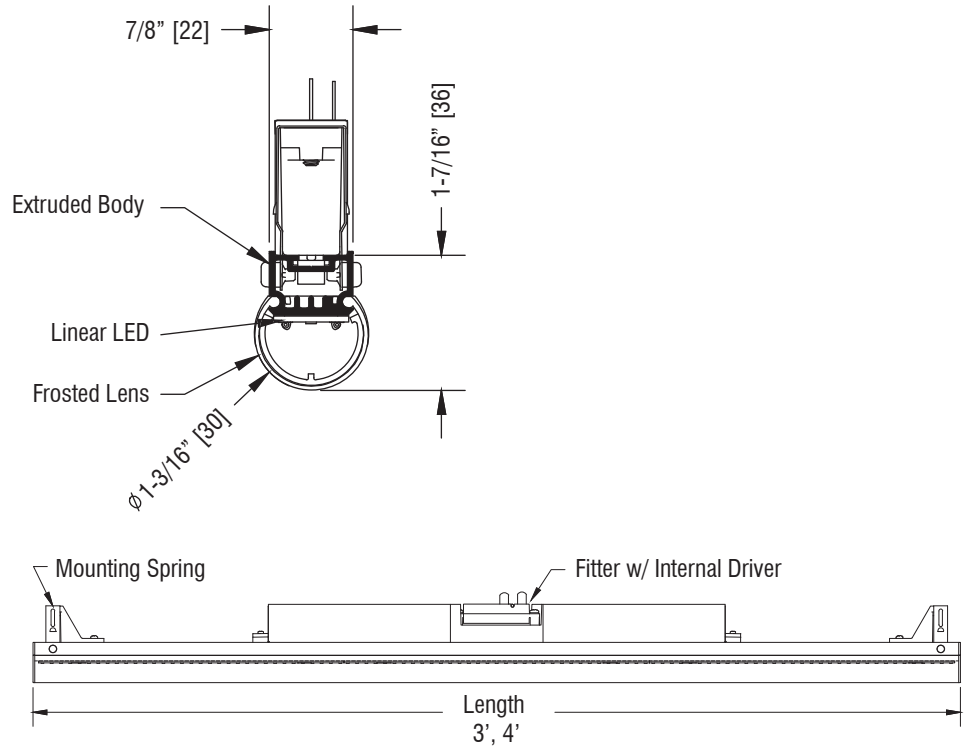
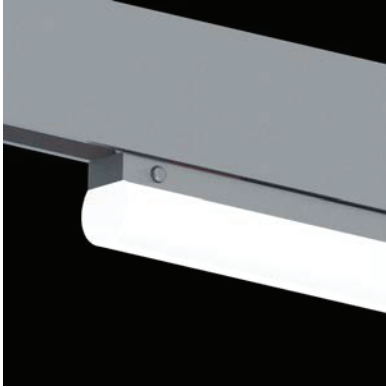


# LC-S

Static White  
Linear LED

Project Name

Type



## Input Requirements

1000 Lumens / ft.	120VAC/0.1A/15W 240VAC/0.1A/16W 277VAC/0.1A/16W
700 Lumens / ft.	120VAC/0.1A/10W 240VAC/0.1A/10W 277VAC/0.1A/10W

Enter Catalog Number Sequentially from Left to Right

 -  -  - 

Model	Mounting	Lumens	CRI	CCT	Adaptor	Dimming	Level	Voltage	Finish
LC3 3'	S Surface	L10 1000	9 95	27 2700	9TC BusRun Clipless	E ELV	1 1%	A 120	P White
LC4 4'		L07 700		30 3000	9TD BusRun Deep			D 240	MB Black
				35 3500	9TS BusRun Shallow			F* 240	BR Brushed
								(2-Circuit)	CP Custom
					9HC BusRun Clipless w/ Driverbox	E ELV	0 10%	C 277	
					9HD BusRun Deep w/ Driverbox	W Wire-less	C Casambi		
					9HS BusRun Shallow w/ Driverbox		A Avi-On		
							Z Zigbee		
							T Lutron Athena		
					ST2 2-Circuit Stucchi	E ELV	0 10%		
					ST3 3-Circuit Stucchi	Z 0-10	D Dark		
					CLG Ceiling	M DMX			
						D DALI			

## Dimming Note

This fixture is provided with LED Drivers suitable for the dimming protocol specified. Dimming performance may vary based on dimmer model or system being used. If exact dimming performance is required, Litelab recommends testing the Litelab fixture with the specified dimmer.

## Flush Fit BusRun Adaptor

Litelab's flush fit BusRun adaptor recesses entirely inside BusRun to provide a clean aesthetic. BusRun fitters are available dimmable to 1% and can be dimmed using an ELV dimming system.



251 Elm Street, Buffalo, NY 14203 USA  
800-238-4120 | www.litelab.com



Edition Date: 07/14/2021