

MODEL NUMBER:	FIXTURE TYPE/SCALE:		FILE NUMBER:	DATE:	NO.	REVISIONS DESCRIPTION	BY	DATE
PROJECT NAME:	N.T.S.		Prod/Slotfix/Bline/BlinetInstall	11/15/07				
APPROX. WEIGHT:	DRAWN BY:	CK'D BY:	FIXTURE DESCRIPTION:					
N/A	S.D.P.		INSTALL FOR TRIMMED BLINE					

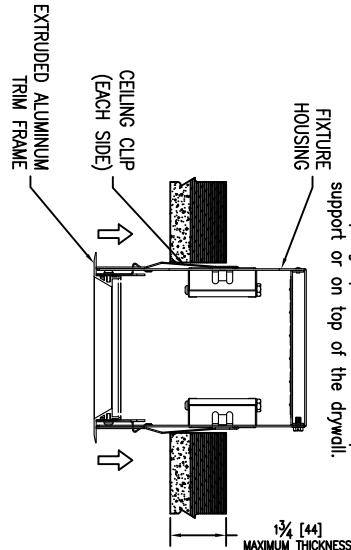
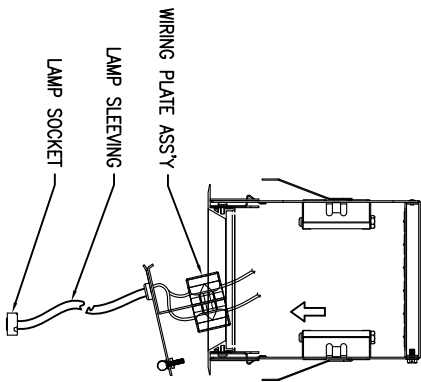
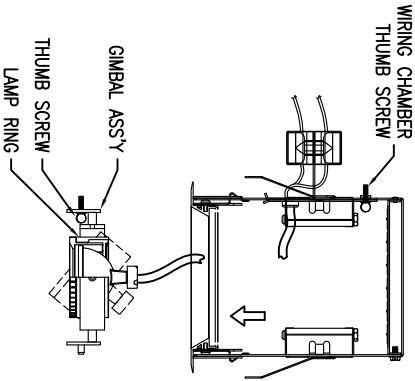
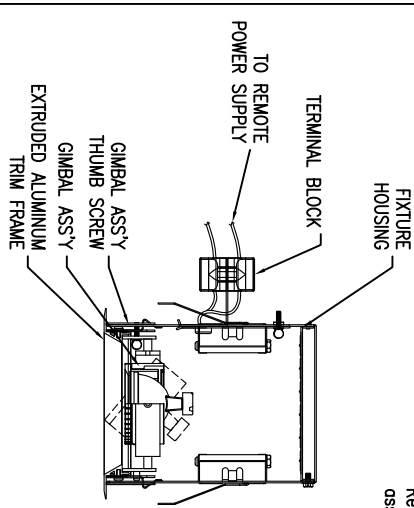
# RETROFIT INSTALLATION

Remove thumb screw in gimbal assembly.  
Remove gimbal assembly by lifting and tilting upwards. Remove assembly from enclosure. Set aside.

Remove thumb screws in wiring plate assembly.  
Lift wiring plate assembly and remove from box. Set aside for later.

Prepare ceiling for rough opening required to accept fixture housing. See spec sheet.

Insert box into ceiling cavity, ceiling clips will spring open to catch on top of the support or on top of the drywall.



Using a philips screwdriver turn adjusting screw clockwise in each ceiling clip until fixture is snug to finished ceiling surface. (do not over tighten)

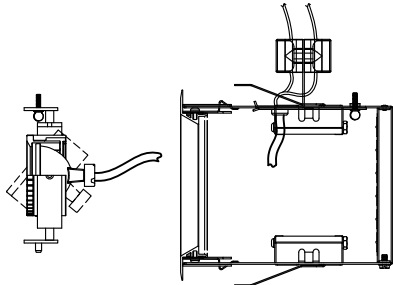
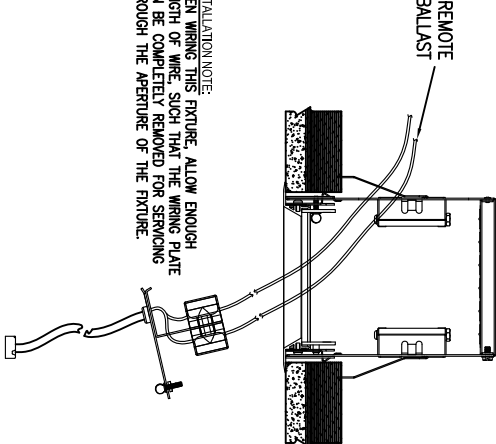
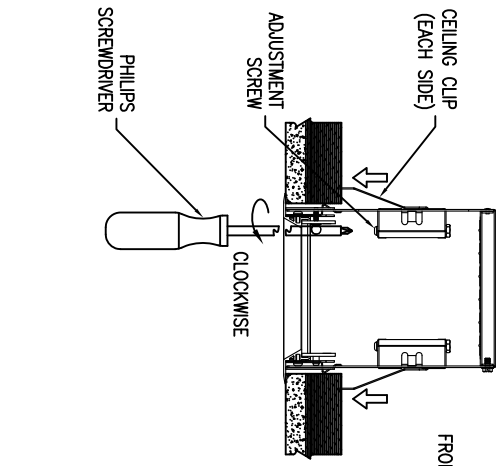
Bring wire through side of enclosure where wiring plate assembly fits.

See note below for proper length of conduit. Failure to do so will make future maintenance of ballast or wiring difficult.

Wire power supplies as required using approved wiring methods and hardware.

Wire power supply to terminal block on put back into enclosure, replace thumb screws and secure unit in place.

Insert gimbal assembly in box repeating steps above. Replace thumb screw.  
Note:  
Gimbal assembly can be mounted in two positions (high and low) by flipping it over.



INSTALLATION NOTE:  
WHEN WIRING THIS FIXTURE, ALLOW ENOUGH LENGTH OF WIRE SUCH THAT THE WIRING PLATE CAN BE COMPLETELY REMOVED FOR SERVICING THROUGH THE APERTURE OF THE FIXTURE.

OPTIONAL BUTTERFLY BRACKETS  
SHIPPED SEPARATELY SEE SEPARATE  
SHEET FOR MOUNTING INSTRUCTIONS

INSTALLATION INFORMATION:  
DO NOT INSTALL INSULATION WITHIN 3" (76mm) OF ANY PART OF THIS FIXTURE. DO NOT BLOCK VENT HOLES ON FIXTURE. MAXIMUM AMBIENT TEMPERATURE NOT TO EXCEED 35°C.