

C20

MR16 GU 5.3
Object Fixture

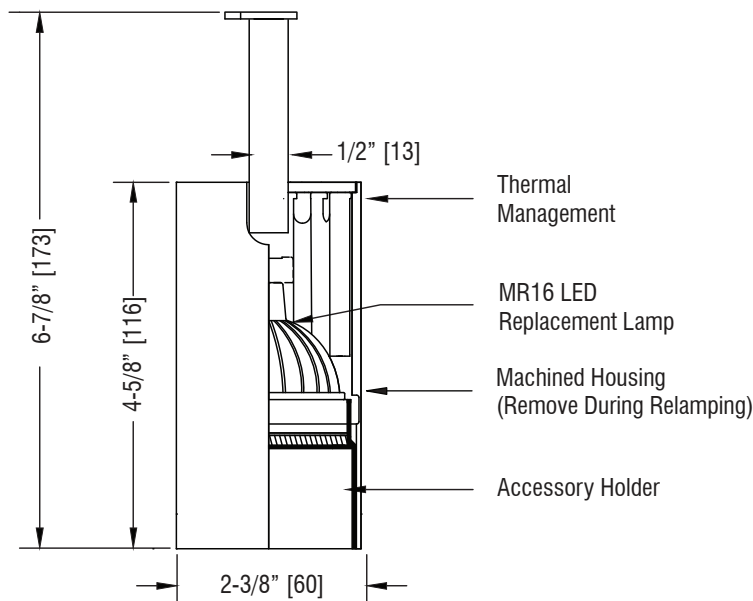


Input Requirements

MR16 LED GU 5.3
LED Replacement Lamp
15 Watt Maximum

Project Name

Type



Enter Catalog Number Sequentially from Left to Right

C20 - - -

Model	Source	Adaptor	Dimming	Level	Options	Voltage	Finish
C20	MR16 - GU 5.3 Base	9IC BusRun Clipless 9ID BusRun Deep 9IS BusRun Shallow	E	ELV	0 10% R Rotation Lock SR Switch w/ Rotation Lock	A 120 D 240 F 240 (2 Circuit) C 277	P White MB Black BR Brushed CP Custom
		9HC BusRun Clipless w/ Driverbox 9HD BusRun Deep w/ Driverbox 9HS BusRun Shallow w/ Driverbox	E	ELV	0 10%		
		ST2 2-Circuit Stucchi ST3 3-Circuit Stucchi 3L 5\" Canopy 7L 2\" QC Canopy	E	ELV	0 10%		

ENTER RAL OR
OTHER FINISH
CODE

Flush Fit BusRun Adaptor

Litelab's flush fit BusRun adaptor recesses entirely inside BusRun to provide a clean aesthetic. It is available with a Switch and Rotation Lock, and is rated up to 50 watts maximum. All fully recessed power supplies are ELV dimmable only.

Dimming Note

This fixture is provided with LED Drivers suitable for the dimming protocol specified. Dimming performance may vary based on dimmer model or system being used. If exact dimming performance is required, Litelab recommends testing the Litelab fixture with the specified dimmer.

Accessories: See Page 5

- ☐ OL-DF-a Beam Softening Film
- ☐ OL-TD-a Beam Softening Lens
- ☐ OL-10x40-a Linear Spread Lens
- ☐ OL-10x60-a Linear Spread Lens
- ☐ OL-30x60-a Universal Spread Lens
- ☐ LVH/a Hexell Louver
- ☐ CHB/a-2 Crosshair Baffle



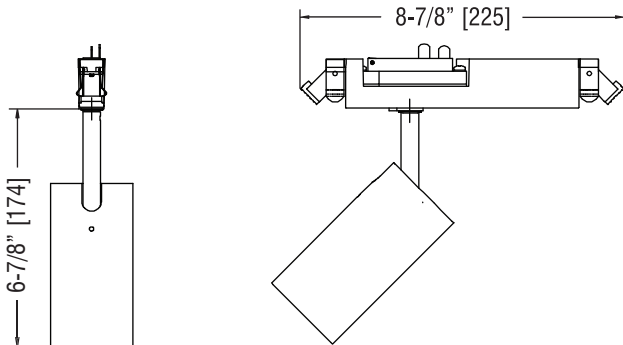
251 Elm Street, Buffalo, NY 14203 USA
800-238-4120 | www.litelab.com



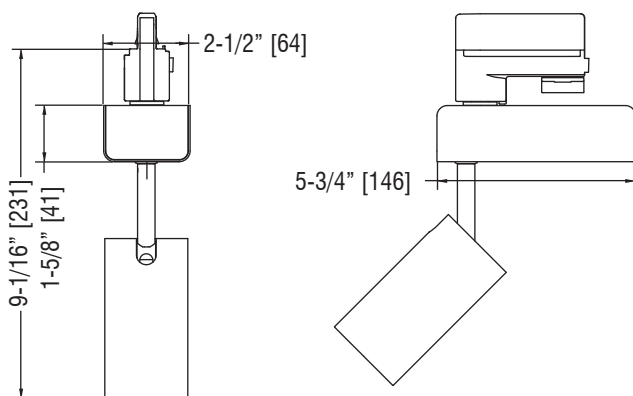
Edition Date: 07/14/2021

Fitter Guide

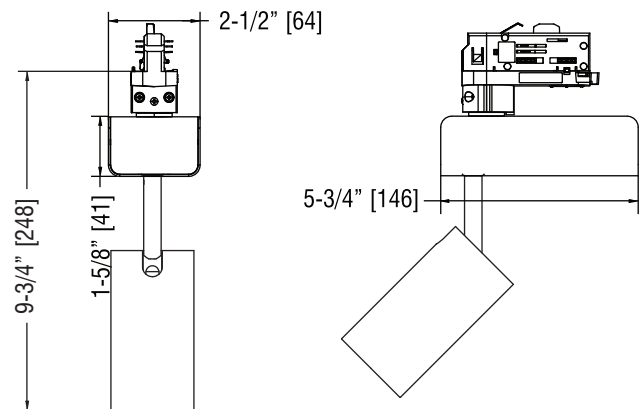
91C - Universal BusRun Fitter - ELV Dimmable Only - 10%



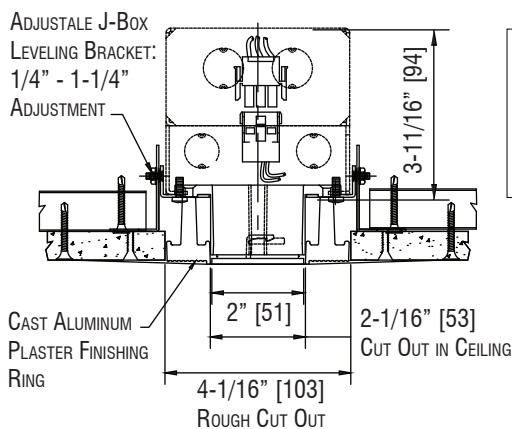
Stucchi - 2-Circuit ELV and 0-10v Dimmable Fitter



Stucchi - 3-Circuit ELV Dimmable Fitter



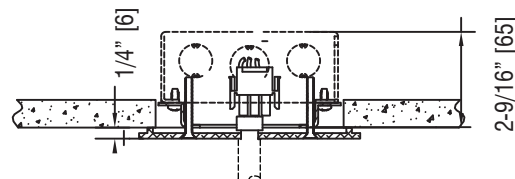
-7L - 2" Dia. Quick Connect Canopy*



-7 Remote Driver
(1) 4" sq x 2-1/8"
J-Box
(1) 4" sq x 1-1/2"
Extension Box

* QC-7K-GYP-P/MB
Canopy Mount ordered
separately.

-3L - 5" Dia. x 1/4" H. Machined Canopy



-5 Remote Driver
(1) 4" sq x 1-1/2"
Extension Box

J-Boxes Supplied by Others



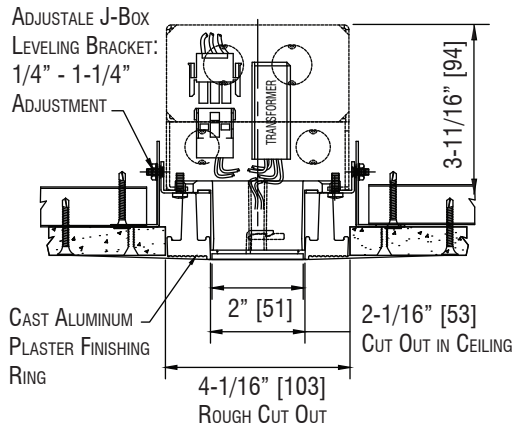
251 Elm Street, Buffalo, NY 14203 USA
800-238-4120 | www.litelab.com

* Covered under one or more of the following patents: US: 8,740,421 B2, D499, 698, D389,012, Republic of China: D149,379, People's Republic of China: ZL 201130358013.3, European Union: RCD #001920356-0001. Additional patents pending. **See fittings and accessories page for mounting options and accessories.



Fitter Guide

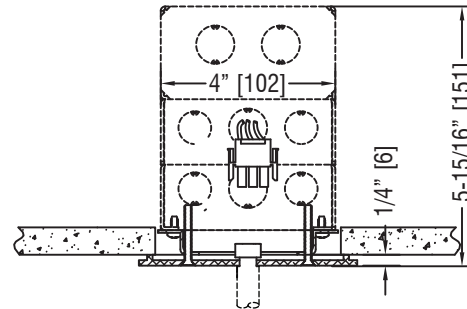
-7L - 2" Dia. Quick Connect Canopy*



**-7 ELV & 0-10v
Driver**
(1) 4" sq x 2-1/8"
J-Box
(1) 4" sq x 1-1/2"
Extension Box

* QC-7K-GYP-P/MB
Canopy Mount ordered
separately.

-3L - 5" Dia. x 1/4" H. Machined Canopy



-3L ELV Driver
(1) 4" sq x 2-1/8"
J-Box
(2) 4" sq x 1-1/2"
Extension Box

J-Boxes Supplied by Others



251 Elm Street, Buffalo, NY 14203 USA
800-238-4120 | www.litelab.com

* Junction Box Volume Note: Box fill must be in compliance with National Electric Code Article 314. Internal Equipment Supplied by Litelab Equals 25 Cubic Inches.



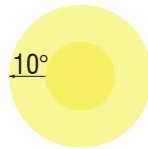
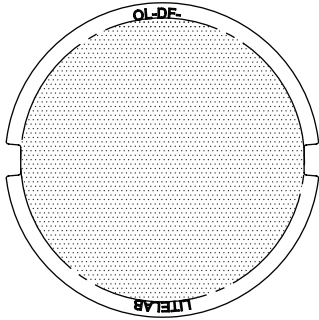
Accessories

FIXTURE SIZE CODE (A): Ø1.95" [50mm]

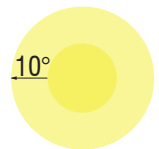
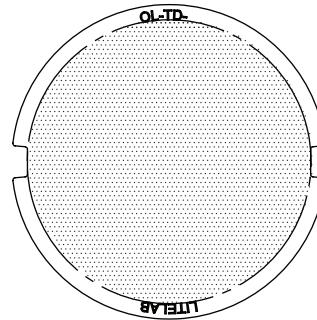
CUSTOM DISTRIBUTION FILMS AVAILABLE ON REQUEST.

OL-DF-A (DIFFUSION FILM)*DIFFUSION FILM: 0.25MM (0.01") FILM SOFTENS BEAM EDGES (FOR USE WITH MULTIPLE MEDIA)*

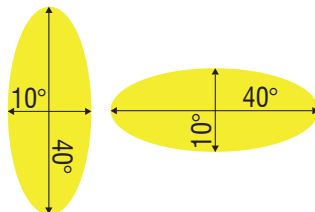
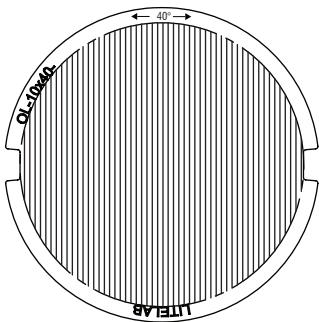
DISTRIBUTION DIAGRAM

OL-TD-A (POLYCARBONATE DIFFUSION LENS)*DIFFUSION FILM: 3MM (0.1") TEXTURED LENS SOFTENS BEAM EDGES (FOR STANDALONE USE)*

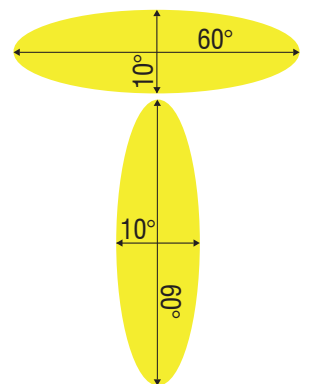
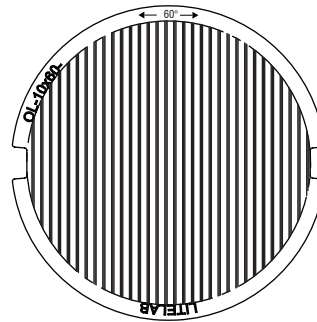
DISTRIBUTION DIAGRAM

OL-10x40-A (LINEAR SPREAD LENS)*40° LINEAR SPREAD LENS: 3MM (0.1") ELLIPTICAL SPREAD FOR LONG / LINEAR OBJECTS*

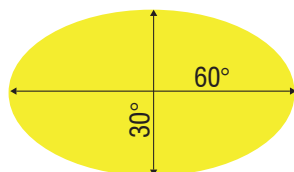
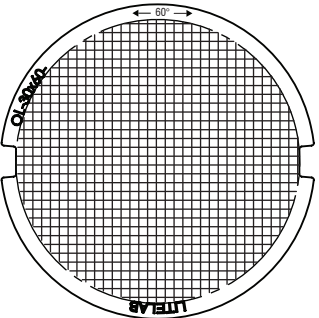
DISTRIBUTION DIAGRAM

OL-10x60-A (LINEAR SPREAD LENS)*60° LINEAR SPREAD LENS: 3MM (0.1") ELLIPTICAL SPREAD FOR LONG / LINEAR OBJECTS*

DISTRIBUTION DIAGRAM

OL-30x60-A (UNIVERSAL SPREAD LENS - INCLUDED)*UNIVERSAL SPREAD LENS: 3MM (0.1") LENS SPREADS LIGHT UNIVERSALLY FOR WIDER DISTRIBUTION*

DISTRIBUTION DIAGRAM

LVH/A (HEXCELL LOUVER)*HEXCELL LOUVER: 3MM (0.1") MATTE BACK FINISH, 45° GLARE CUTOFF FOR VISUAL COMFORT*