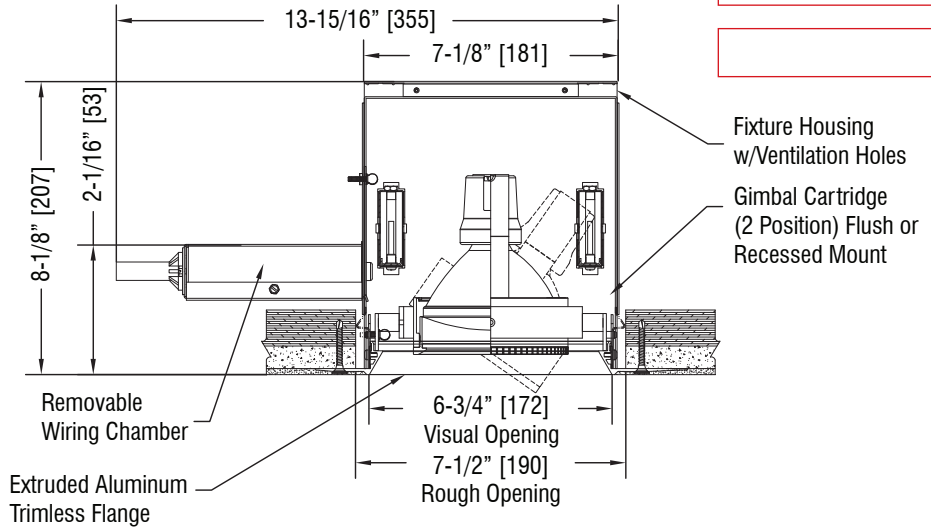
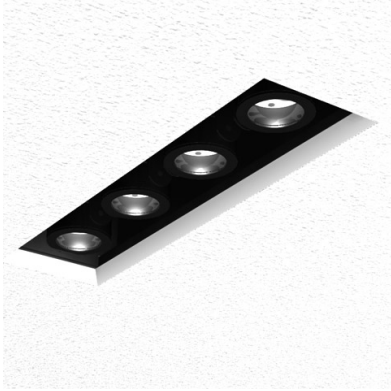


B-Line Trimless PAR30 Shortneck

Project Name

Type



Input Requirements

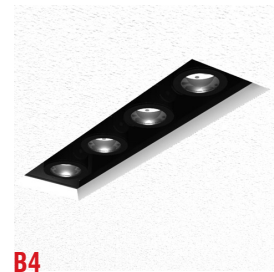
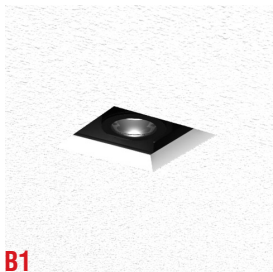
PAR30 Shortneck
LED Replacement Lamp
30 Watt Maximum

Enter Catalog Number Sequentially from Left to Right

 - - - - - - -

Model	Source	Dimming	Wattage	Voltage	Trim Detail	Interior Finish	Fixture Finish
B1	PAR30 Shortneck	E ELV	1 15 A	120	TL Trimless	MB Matte Black	P White
B2		Z 0-10	2 20 D	240			MB Black
B3			3 35 C	277			BR Brushed
B4							CP Custom

ENTER RAL OR OTHER FINISH CODE



Installation Note

When wiring this fixture, allow enough length of flexible conduit such that the wiring compartment can be completely removed for servicing through the aperture of the fixture.

Installation Information

Do not install insulation within 3" [76mm] of any parts of this fixture. Do not block vent holes on fixture. Maximum ambient temperature not to exceed 35° C.

Dimming Note

Dimming performance may vary based on dimmer model or system, and the paired lamp. If exact dimming performance is required, Litelab recommends testing the specified lamp with the specified dimmer.

Accessories: See Page 3

- OL-DF-p Beam Softening Film
- OL-TD-p Beam Softening Lens
- OL-10x40-p Linear Spread Lens
- OL-10x60-p Linear Spread Lens
- OL-30x60-p Universal Spread Lens
- LVH/p Hexell Louver

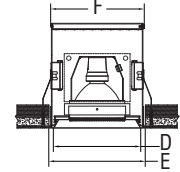
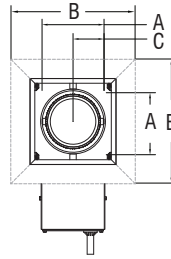


251 Elm Street, Buffalo, NY 14203 USA
800-238-4120 | www.litelab.com

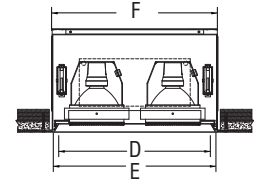
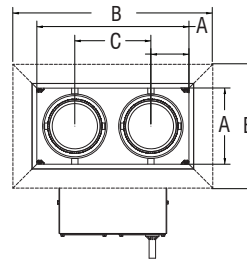


Aperture Details

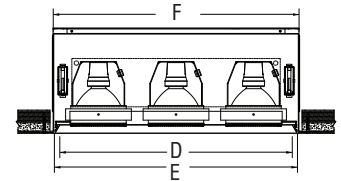
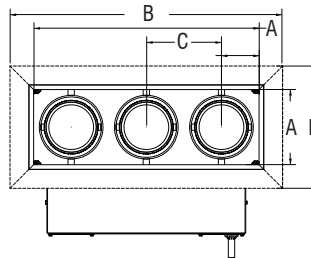
<input type="checkbox"/>	B-1-PAR30
(A) Aperture	6" [152] x 6" [152]
(B) Flange	9-3/4" [248] x 9-3/4" [248]
(C) Lamp Center	3" [76]
(D) Visual Opening	6-3/4" [172] x 6-3/4" [172]
(E) Rough Opening	7-1/2" [191] x 7-1/2" [191]
(F) Housing	7-1/8" [181] x 7-1/8" [181]



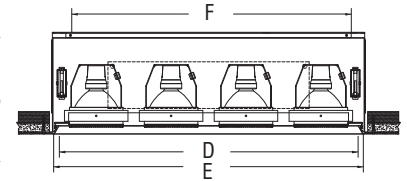
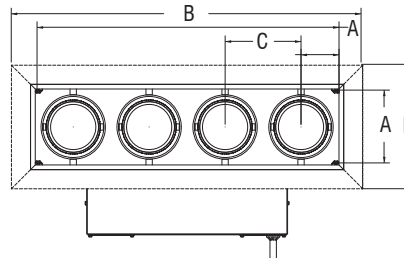
<input type="checkbox"/>	B-2-PAR30
(A) Aperture	6" [152] x 12" [305]
(B) Flange	15-3/4" [400] x 9-3/4" [248]
(C) Lamp Center	6" [152] o.c.
(D) Visual Opening	12-3/4" [324] x 6-3/4" [172]
(E) Rough Opening	13-1/2" [343] x 7-1/2" [190]
(F) Housing	13-1/8" [334] x 7-1/8" [181]



<input type="checkbox"/>	B-3-PAR30
(A) Aperture	6" [152] x 18" [457]
(B) Flange	21-3/4" [553] x 9-3/4" [248]
(C) Lamp Center	6" [152] o.c.
(D) Visual Opening	18-3/4" [476] x 6-3/4" [172]
(E) Rough Opening	19-1/2" [495] x 7-1/2" [190]
(F) Housing	19-1/8" [486] x 7-1/8" [181]



<input type="checkbox"/>	B-4-PAR30
(A) Aperture	6" [152] x 24" [610]
(B) Flange	27-3/4" [705] x 9-3/4" [248]
(C) Lamp Center	6" [152] o.c.
(D) Visual Opening	24-3/4" [629] x 6-3/4" [172]
(E) Rough Opening	25-1/2" [648] x 7-1/2" [190]
(F) Housing	25-1/8" [638] x 7-1/8" [181]



B-Line Trimless PAR30 Shortneck

Project Name

Type

Accessories

CUSTOM DISTRIBUTION FILMS AVAILABLE ON REQUEST.

SIZE CODE P: 3.789" [96MM]

DIFFUSION FILM: 0.25MM (0.01") FILM SOFTENS BEAM EDGES

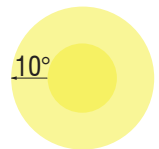
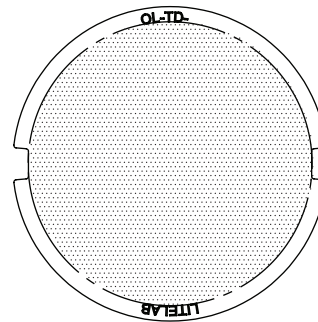
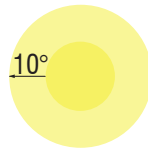
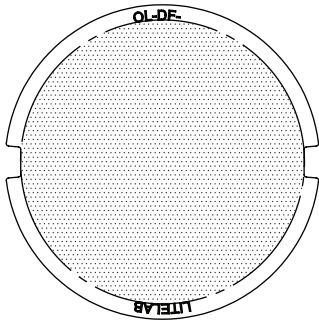
TEXTURED DIFFUSION LENS: 3MM (0.1") TEXTURED LENS SOFTENS BEAM EDGES

OL-DF-P (DIFFUSION FILM)

DISTRIBUTION DIAGRAM

OL-TD-P (POLYCARBONATE DIFFUSION LENS)

DISTRIBUTION DIAGRAM

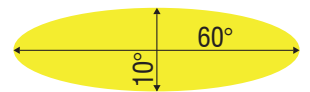
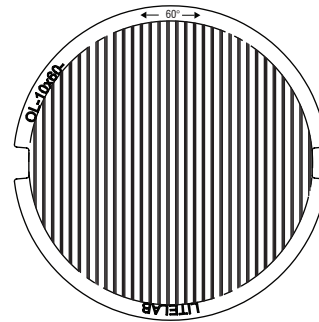
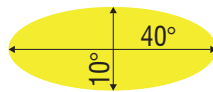
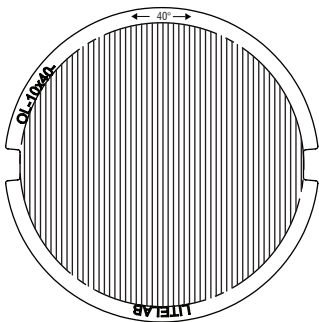


40° LINEAR SPREAD LENS: 3MM (0.1") LENS SPREADS LIGHT LINEARLY FOR LONG OBJECTS

60° LINEAR SPREAD LENS: 3MM (0.1") LENS SPREADS LIGHT LINEARLY FOR LONG OBJECTS

OL-10x40-P (LINEAR SPREAD LENS)

OL-10x60-P (LINEAR SPREAD LENS)



UNIVERSAL SPREAD LENS: 3MM (0.1") LENS SPREADS LIGHT UNIVERSALLY FOR WIDER DISTRIBUTION

HEXCELL LOUVER: REDUCES HIGH-ANGLE GLARE TO PROVIDE COMFORTABLE LIGHTING

OL-60x30-P (UNIVERSAL SPREAD LENS)

LVH/P (HEXCELL LOUVER)

