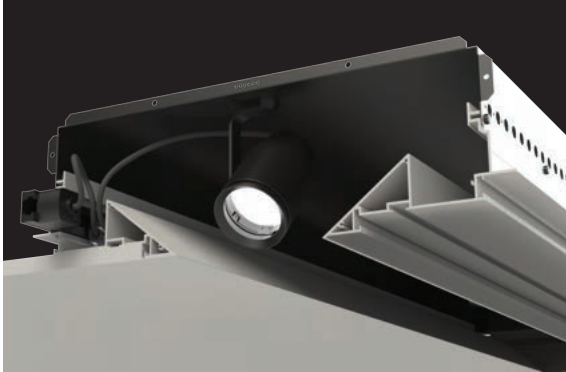


ALS-H06

Architectural Light Slot

Project Name

Type



Features & Benefits:

- Magnet-mounted fixture for optimal fixture placement
- Field adjustable hanger brackets
- HVAC Supply and Return compatible
- Available for most contemporary ceiling systems

(Consult Factory for Custom Ceilings and Applications)

Compatible with:

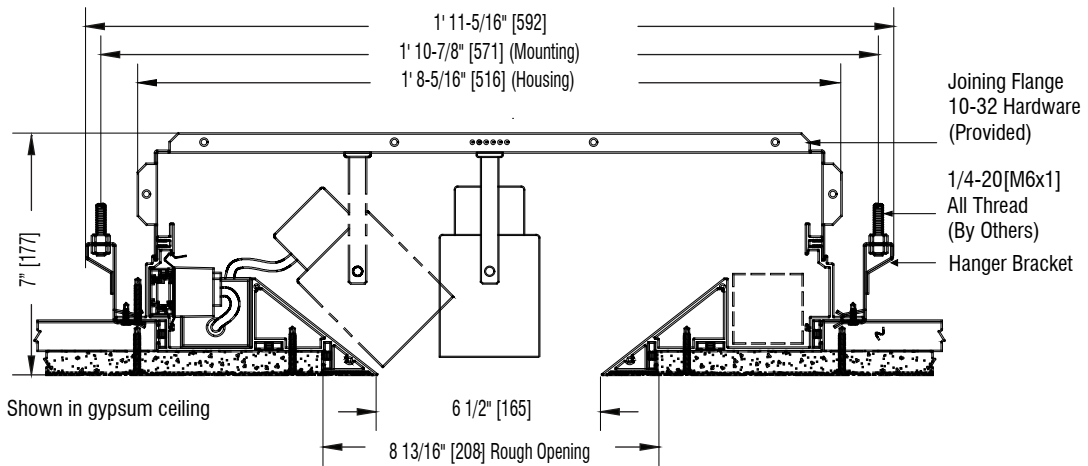
- M3Z - 10°-30° Zoom
- M3W - Wallwash
- M3O - Fixed Focus 10°, 22° & 33°
- M3S - 6° Very Narrow Spot

For fixture specifications, visit www.litelab.com

ALS - H06 - - - - - -

System	Housing	*Length (in Inches)	Voltage	Dimming Protocol	Ceiling Condition	Finish
	Backbox by Litelab	H06	* Length refers to the visual opening, not to total system length. See page 3 for backbox length.	120 Volts A 240 Volts D 277 Volts C	E	White P Matte Black MB Custom CP

Ceiling Thickness Finish Code



Modular Slot Components - Gypsum | Backbox by Litelab

Part Number	Description
ALS-12-H06-TL-MB	12" [305mm] Visual Opening - Gypsum Unit
ALS-24-H06-TL-MB	24" [610mm] Visual Opening - Gypsum Unit
ALS-36-H06-TL-MB	36" [914mm] Visual Opening - Gypsum Unit
ALS-48-H06-TL-MB	48" [1219mm] Visual Opening - Gypsum Unit
ALS-72-H06-TL-MB	72" [1829mm] Visual Opening - Gypsum Unit

Part Number	Description
ALS-ECL-H06-TL-MB	6" [152mm] Visual Opening - Gypsum End Cap Left
ALS-EGR-H06-TL-MB	6" [152mm] Visual Opening - Gypsum End Cap Right
ALS-EFL-H06-TL-MB	6" [152mm] Visual Opening - Gypsum End Feed Left
ALS-EFR-H06-TL-MB	6" [152mm] Visual Opening - Gypsum End Feed Right
ALS-CR-H06-TL-MB	20" x 20" [508mm x 508mm] Visual Opening - Gypsum Corner



251 Elm Street, Buffalo, NY 14203 USA
800-238-4120 | www.litelab.com

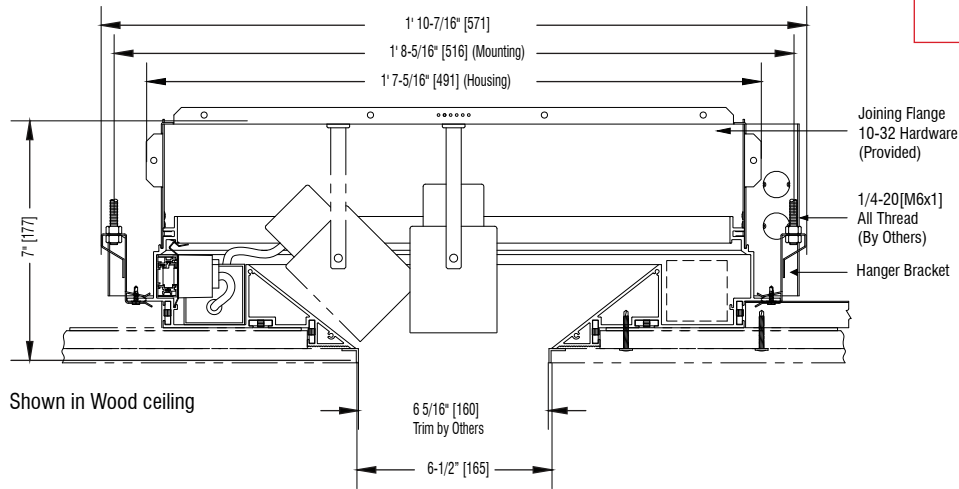


ALS-H06

Architectural Light Slot

Project Name

Type



Modular Slot Components - Wood | Backbox by Litelab

Part Number	Description	Part Number	Description
ALS-12-H06-TR-MB	12" [305mm] Visual Opening - Wood/Metal/Stone/Accoustic Unit	ALS-ECL-H06-TR-MB	6" [152mm] Visual Opening - Wood/Metal/Stone/Accoustic End Cap Left
ALS-24-H06-TR-MB	24" [610mm] Visual Opening - Wood/Metal/Stone/Accoustic Unit	ALS-ECR-H06-TR-MB	6" [152mm] Visual Opening - Wood/Metal/Stone/Accoustic End Cap Right
ALS-36-H06-TR-MB	36" [914mm] Visual Opening - Wood/Metal/Stone/Accoustic Unit	ALS-EFL-H06-TR-MB	6" [152mm] Visual Opening - Wood/Metal/Stone/Accoustic End Feed Left
ALS-48-H06-TR-MB	48" [1219mm] Visual Opening - Wood/Metal/Stone/Accoustic Unit	ALS-EFR-H06-TR-MB	6" [152mm] Visual Opening - Wood/Metal/Stone/Accoustic End Feed Right
ALS-72-H06-TR-MB	72" [1829mm] Visual Opening - Wood/Metal/Stone/Accoustic Unit	ALS-CR-H06-TR-MB	20" x 20" [508mm x 508mm] Visual Opening - Wood/Metal/Stone/Accoustic Corner

Power Distribution / Dimming Controls - All Configurations

Power Distribution | ELV / Reverse Phase Dimming

BT-156-P/MB	120 Volt Basic Track Feed - One Feed/Side
BT-104-P/MB	120 Volt Basic Track Joiner - 4'
BT-108-P/MB	120 Volt Basic Track Joiner - 8'
BT-111-P/MB	120 Volt Basic Track Straight Connector
BT-112-P/MB	120 Volt Basic Track L-Connector
BT-126-P/MB	120 Volt Basic Track Flexible Connector

Power Distribution - 120v, 240v, 277v | 0-10v / DMX / DALI / Lutron

(Consult Factory)

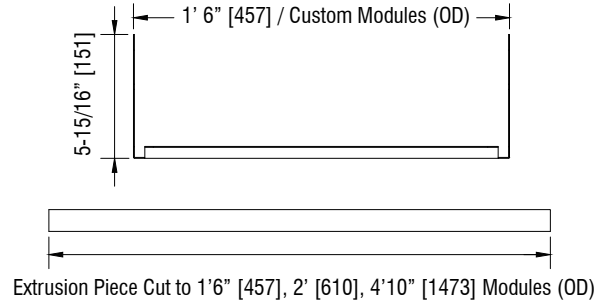
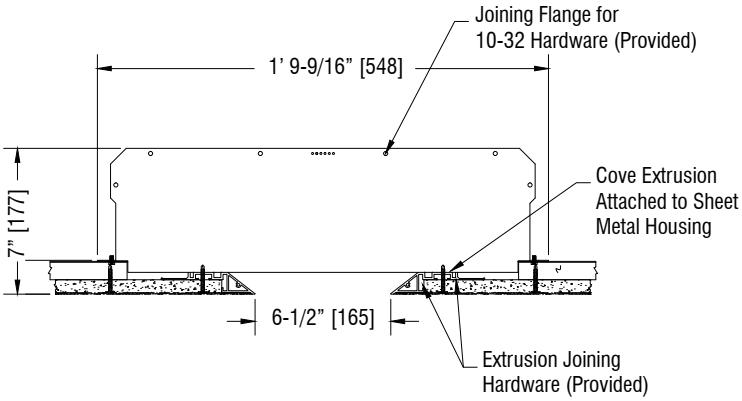
ALS-H06

Architectural Light Slot

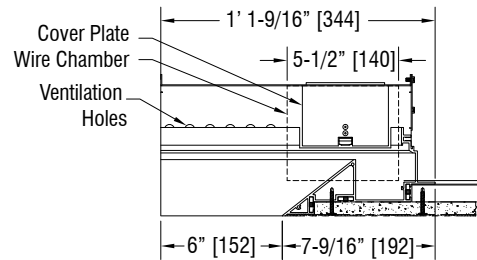
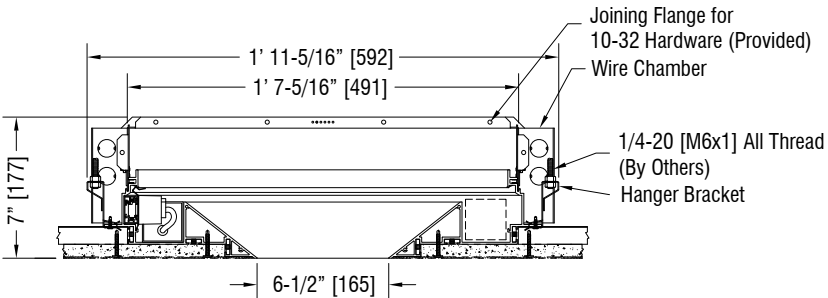
Project Name

Type

Beam Cover Unit: ALS-BC18-H06
ALS-BCxx-H06



Endcap: ALS-ECR/ECL-H06



90° Corner Unit: ALS-CR-H06

