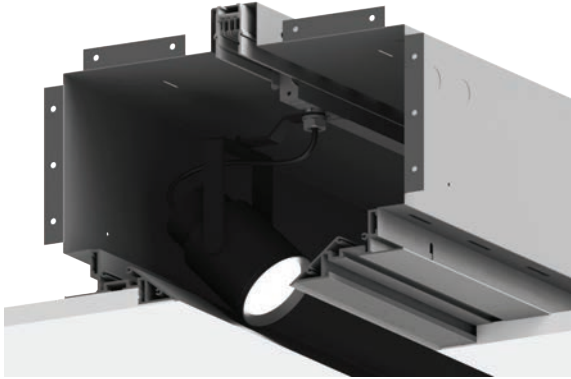


# ALS-H02

## Architectural Light Slot

Project Name

Type



### Features & Benefits:

- Field adjustable hanger brackets
- Adjustable housing units
- HVAC Supply and Return compatible
- Available for most contemporary ceiling systems

(Consult Factory for Custom Ceilings and Applications)



Compatible with:

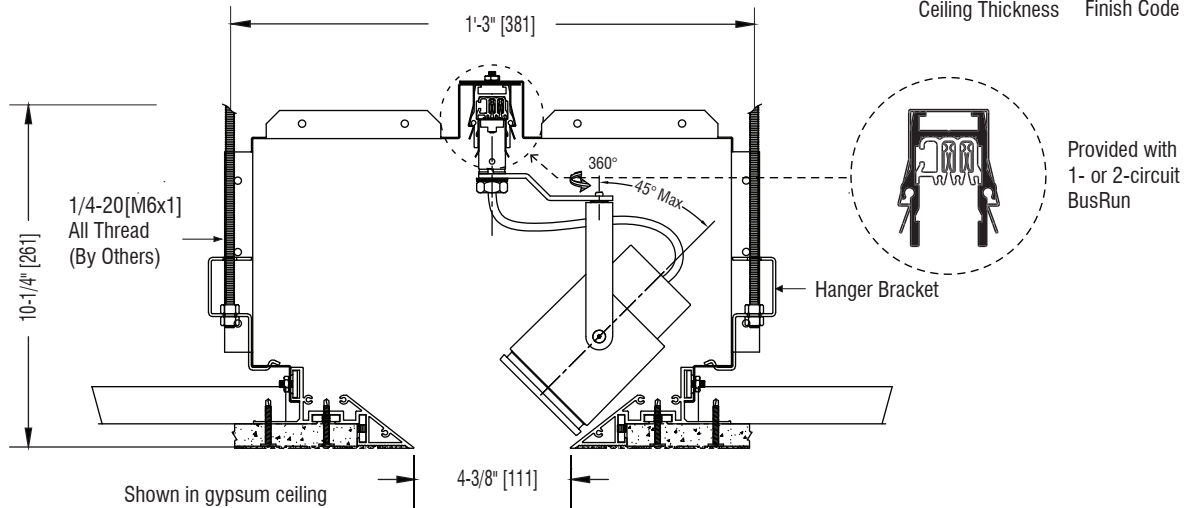
- Y3Z - 10°-30° Zoom
- Y3W - Wallwash
- Y30 - Fixed Focus 10°, 22° & 33°
- Y3S - 6° Very Narrow Spot

For fixture specifications, visit [www.litelab.com](http://www.litelab.com)

ALS - H02 -  -  -  -  -  -

System	Housing	Length* (in Inches)	Voltage	Dimming Protocol	Ceiling Condition	Finish
	Backbox by Litelab	H02	* Length refers to the visual opening, not to total system length. See page 3 for backbox length.	120 Volts A 240 Volts D 277 Volts C	E	GP WD ST MP AC

Ceiling Thickness  Finish Code



### Modular Slot Components - Gypsum | Backbox by Litelab

Part Number	Description
ALS-09-H02-TL-P	9" [229mm] Visual Opening - Gypsum Unit
ALS-12-H02-TL-P	12" [305mm] Visual Opening - Gypsum Unit
ALS-24-H02-TL-P	24" [610mm] Visual Opening - Gypsum Unit
ALS-36-H02-TL-P	36" [914mm] Visual Opening - Gypsum Unit
ALS-48-H02-TL-P	48" [1219mm] Visual Opening - Gypsum Unit
ALS-72-H02-TL-P	72" [1829mm] Visual Opening - Gypsum Unit

Part Number	Description
ALS-ECL-H02-TL-P	6" [152mm] Visual Opening - Gypsum End Cap
ALS-AJ-H02-TL-P	1" - 12" [25 - 305mm] Visual Opening - Adjustable
ALS-BC-H02-TL-P	1', 2', 3' [305, 610, 914mm] Beam Cover Modules
ALS-EL-H02-TL-P	15" x 15" [381mm x 381mm] Visual Opening - Corner
ALS-LF-H02-TL-P	15" x 15" [381mm x 381mm] Visual Opening - Corner Feed



251 Elm Street, Buffalo, NY 14203 USA  
800-238-4120 | [www.litelab.com](http://www.litelab.com)

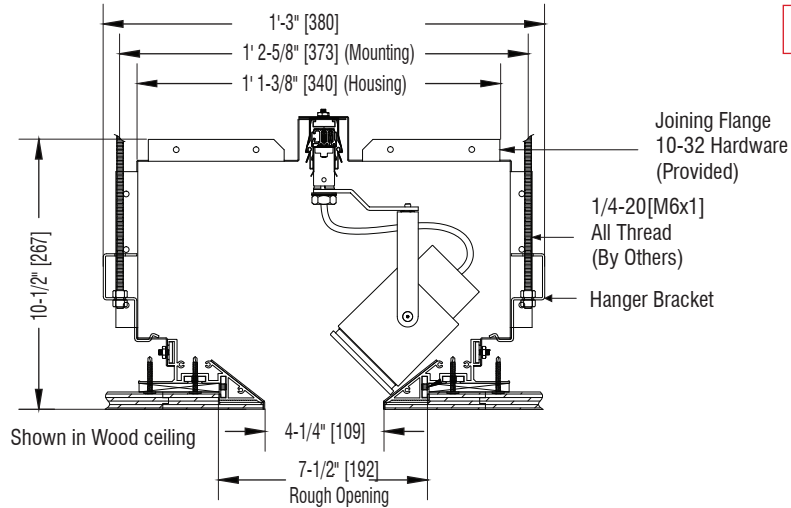


# ALS-H02

## Architectural Light Slot

Project Name

Type

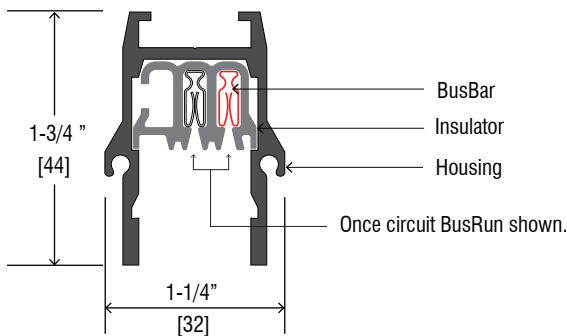
### Modular Slot Components - Trimmed | Backbox by Litelab

Part Number	Description	Part Number	Description
ALS-09-H02-TR-P	9" [229mm] Visual Opening - Trimmed Unit	ALS-EC-H02-TR-P	6" [152mm] Visual Opening - Trimmed End Cap
ALS-12-H02-TR-P	12" [305mm] Visual Opening - Trimmed Unit	ALS-AJ-H02-TR-P	1" - 12" [25 - 305mm] Visual Opening - Adjustable
ALS-24-H02-TR-P	24" [610mm] Visual Opening - Trimmed Unit	ALS-BC-H02-TR-P	1', 2', 3' [305, 610, 914mm] Beam Cover Modules
ALS-36-H02-TR-P	36" [914mm] Visual Opening - Trimmed Unit	ALS-EL-H02-TR-P	15" x 15" [381mm x 381mm] Visual Opening - Corner
ALS-48-H02-TR-P	48" [1219mm] Visual Opening - Trimmed Unit	ALS-LF-H02-TR-P	15" x 15" [381mm x 381mm] Visual Opening - Corner Feed
ALS-72-H02-TR-P	72" [1829mm] Visual Opening - Trimmed Unit		

### Modular Slot Components | BusRun



Feed Code	Profile / Mounting	Vinyl / Voltage	Vinyl / Voltage	Amperage	Total Length of Straight Run (in.)*	Finish	Whip (ft.)
BUS		1A	n/a	16A		Matte Black	MB
EEF		2A		20A			
		6A		30A			
		3D		60A			
		2D					
		6D					
		3C					



### Circuiting Chart

<b>1A</b> 1 circ. (120V) 1-hot, 1-neutral 	<b>2A</b> 2 circ. (120V) 2-hot, 1-neutral 	<b>3D</b> 1 circ. (230V) 1-hot, 1-neutral 
<b>2D</b> 2 circ. (240V) 2-hot, 1-neutral 	<b>3C</b> 1 circ. (277V) 1-hot, 1-neutral 	<b>6A</b> 1 circ. (120V) 2-hot, 1-neutral tied hots 
		<b>6D</b> 1 circ. (230V) 2-hot, 1-neutral tied hots 

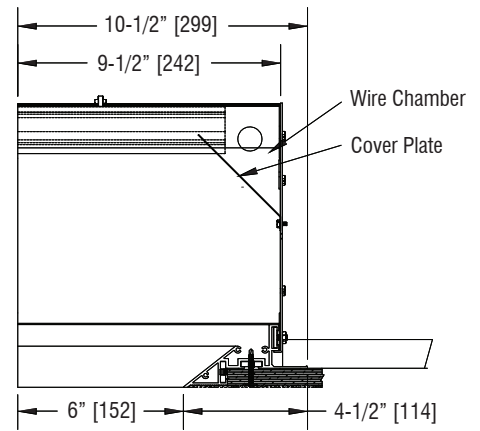
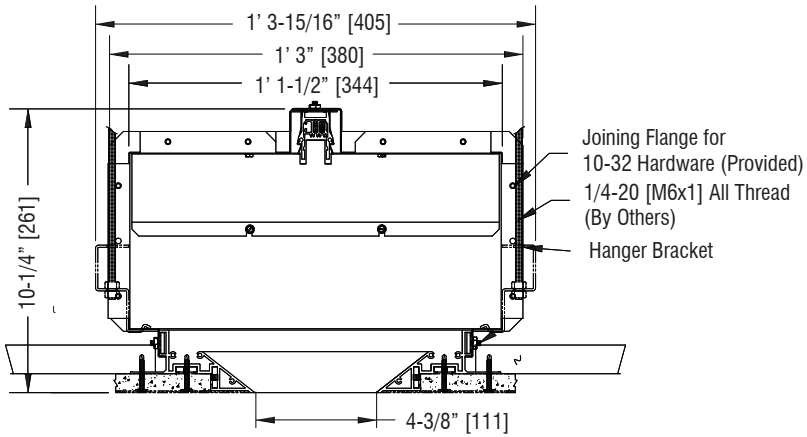
# ALS-H02

Architectural Light Slot

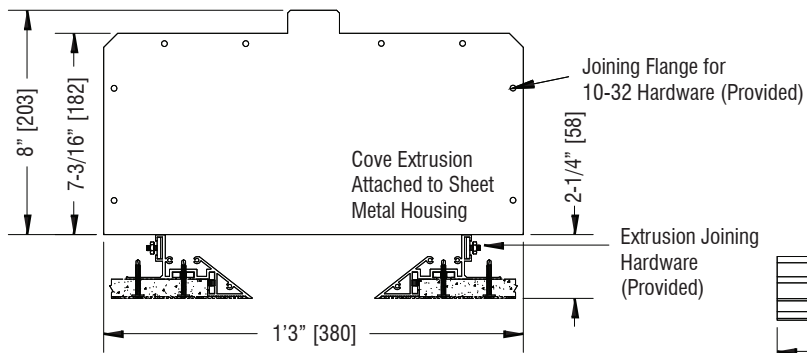
Project Name

Type

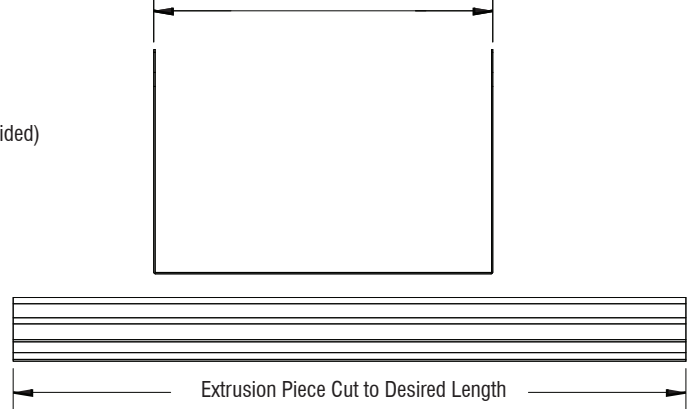
Endcap: ALS-EC-H02



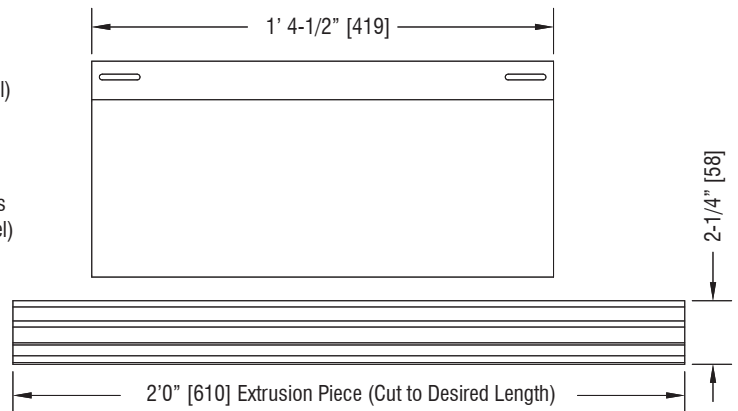
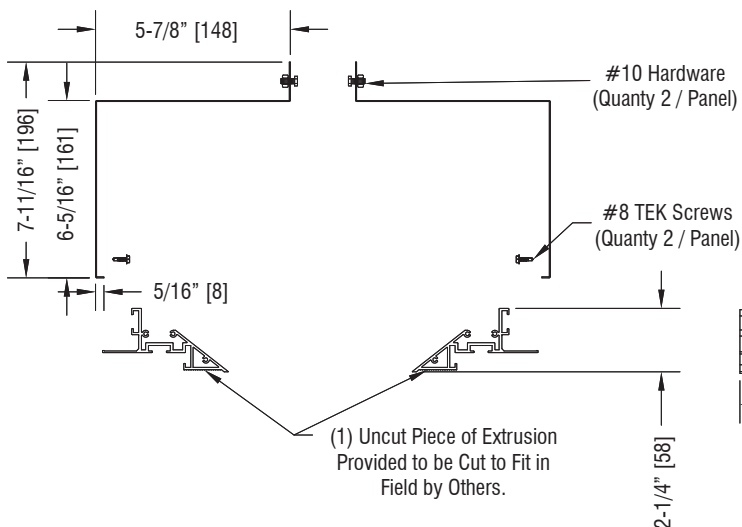
Beam Cover Unit: ALS-BC-H02



1' [305], 2' [610], 3' [914] Modules



Adjustable Unit: ALS-AJ-H02



# ALS-H02

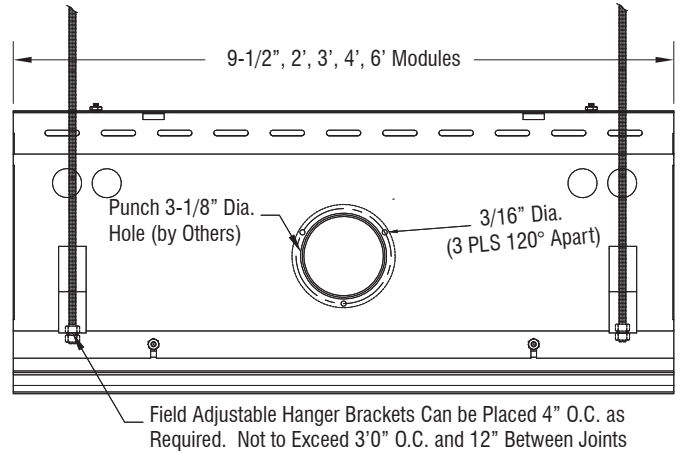
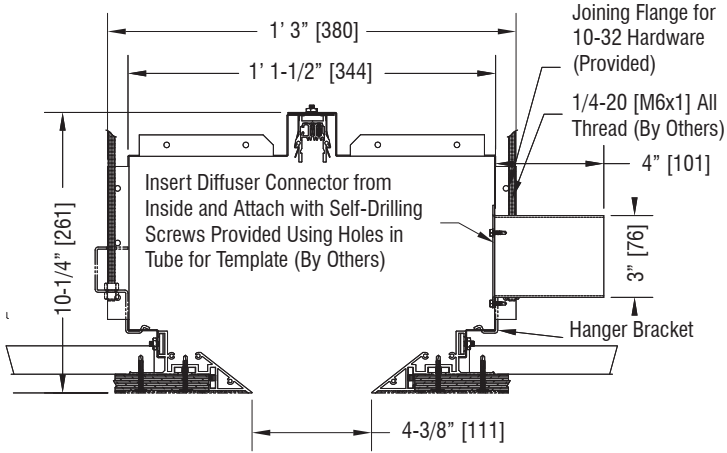
Architectural Light Slot

Project Name

Type



HVAC Connection: ALS-XX-H02-MB-V



Beam Cover Unit: ALS-EL-H02  
ALS-LF-H02

